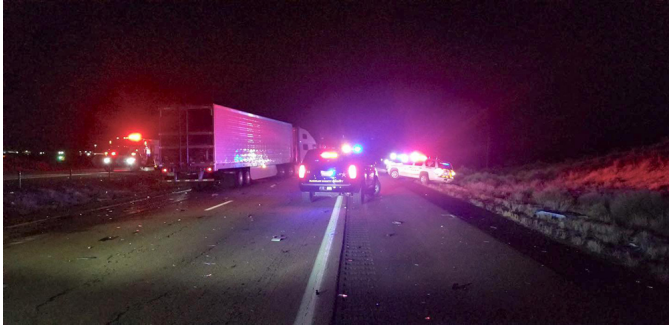


Wrong way driver killed in semi-truck collision

Written by By Molly Ann Howell Sun Correspondent
Wednesday, 20 April 2022 05:17



A car was driving in the wrong direction on I-40 when it collided with a semi-truck, killing Falisha Leuppe, 43, of Coyote Canyon, Ariz., during the early morning hours of April 3.

McKinley County Sheriff's Office Sgt. Shane Bennett and his crew handled the crash scene, close to the 5-mile marker on eastbound I-40.

According to McKinley County Undersheriff James Maiorano III, Metro Dispatch received a call around midnight about a car going westbound in the eastbound lanes of I-40. A few seconds after that initial call, Metro Dispatch received another call where the caller said the car had crashed into a semi-truck.

Maiorano said that so far, he does not believe alcohol was a factor in the crash.

"We do not know what led to her going the wrong way on the interstate," Maiorano said. "We just don't have enough information to conclude that yet."

By Molly Ann Howell
Sun Correspondent